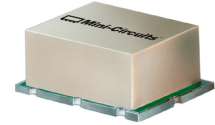


High IP3 Frequency Mixer

SYM-18H+ SYM-18H

Level 17 (LO Power +17 dBm) 5 to 1800 MHz



CASE STYLE: TTT167

Maximum Ratings

Operating Temperature	-40°C to 85°C
Storage Temperature	-55°C to 100°C
RF Power	200mW
IF Current	40mA
Permanent damage may occur if any of these limits are exceeded.	

Pin Connections

LO	2
RF	1
IF	3
GROUND	4,5,6

Features

- low conversion loss, 5.75 dB typ.
- excellent L-R isolation, 45 dB typ.; L-I, 50 dB typ.
- IF response to DC

Applications

- VHF/UHF TV

+RoHS Compliant

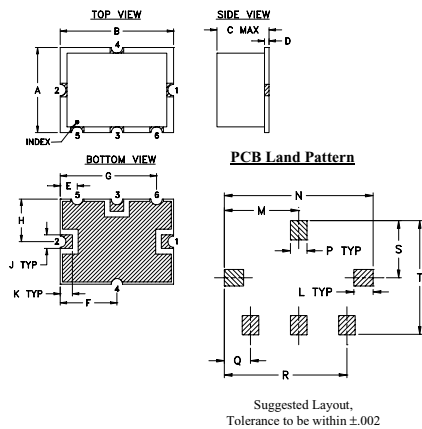
The +Suffix identifies RoHS Compliance. See our web site for RoHS Compliance methodologies and qualifications



Available Tape and Reel at no extra cost

Reel Size	Devices/Reel
7"	10, 20, 50, 100, 200
13"	500

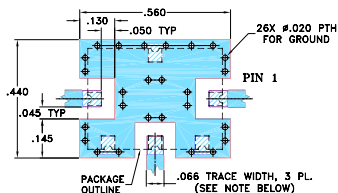
Outline Drawing



Outline Dimensions (inch/mm)

A	B	C	D	E	F	G	H	J	K
.38	.50	.23	.020	.075	.250	.425	.187	.050	.050
9.65	12.70	5.84	0.51	1.91	6.35	10.80	4.75	1.27	1.27
L	M	N	P	Q	R	S	T	wt.	
.070	.270	.540	.060	.095	.445	.208	.415	grams	
1.78	6.86	13.72	1.52	2.41	11.30	5.28	10.54	0.8	

Demo Board MCL P/N: TB-12 Suggested PCB Layout (PL-079)



Notes

- Performance and quality attributes and conditions not expressly stated in this specification document are intended to be excluded and do not form a part of this specification document.
- Electrical specifications and performance data contained in this specification document are based on Mini-Circuit's applicable established test performance criteria and measurement instructions.
- The parts covered by this specification document are subject to Mini-Circuits standard limited warranty and terms and conditions (collectively, "Standard Terms"); Purchasers of this part are entitled to the rights and benefits contained therein. For a full statement of the Standard Terms and the exclusive rights and remedies thereunder, please visit Mini-Circuits' website at www.minicircuits.com/MCLStore/terms.jsp

Electrical Specifications

FREQUENCY (MHz)		CONVERSION LOSS (dB)				LO-RF ISOLATION (dB)						LO-IF ISOLATION (dB)			IP3 at center band (dBm)			
LO/RF	IF	Mid-Band		Total Range	L		M		U		L		M			U		
$f_L - f_U$		\bar{X}	σ	Max.	Max.	Typ.	Min.	Typ.	Min.	Typ.	Min.	Typ.	Min.	Typ.	Min.	Typ.		
5-1800	10-1500*	5.75	.10	7.6	8.9	50	28	45	35	40	24	39	22	50	30	30	22	30

1 dB COMP: +14 dBm typ.

m=mid band [$2f_L$ to $f_U/2$]

*Conversion loss measured at IF frequency between 10 and 1300 MHz

L = low range [f_L to $10 f_L$]

m = mid band [$2f_L$ to $f_U/2$]

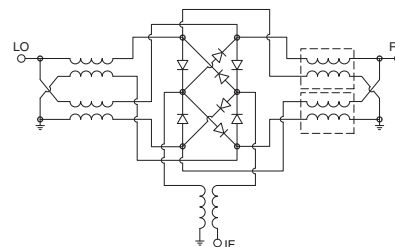
M = mid range [$10 f_L$ to $f_U/2$]

U = upper range [$f_U/2$ to f_U]

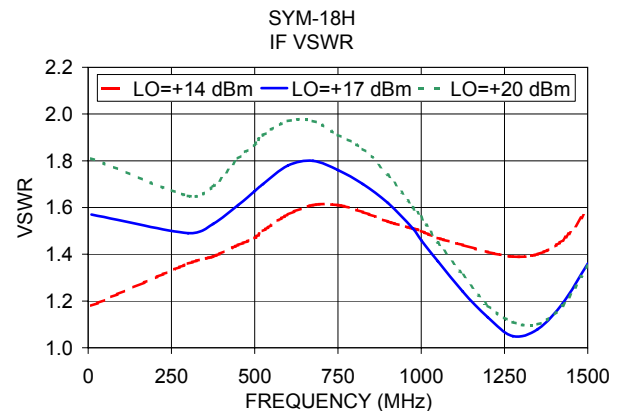
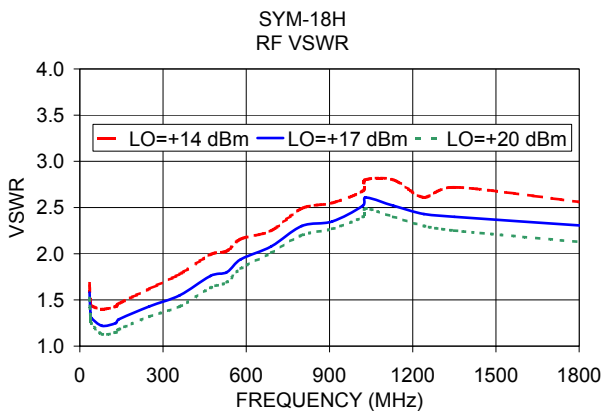
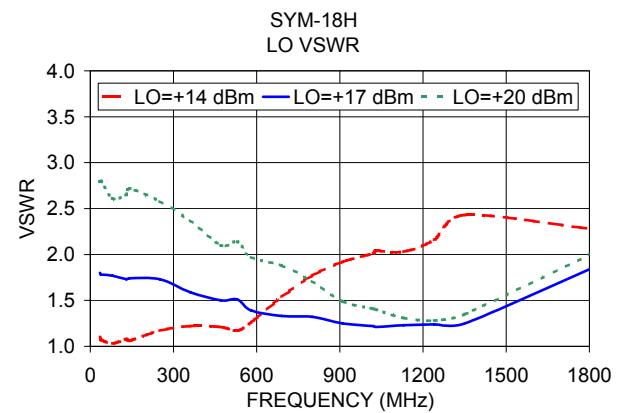
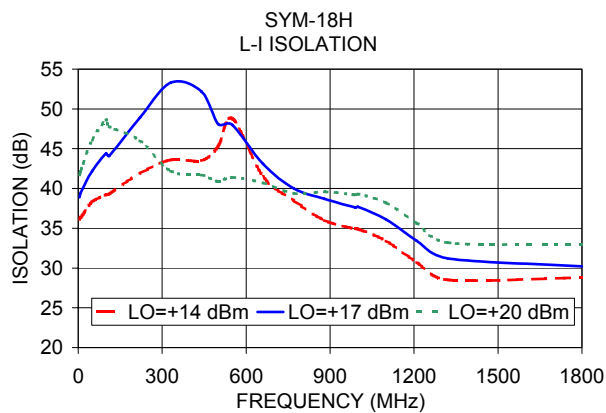
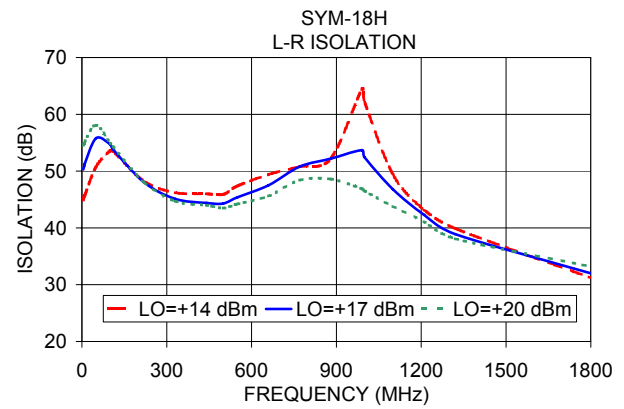
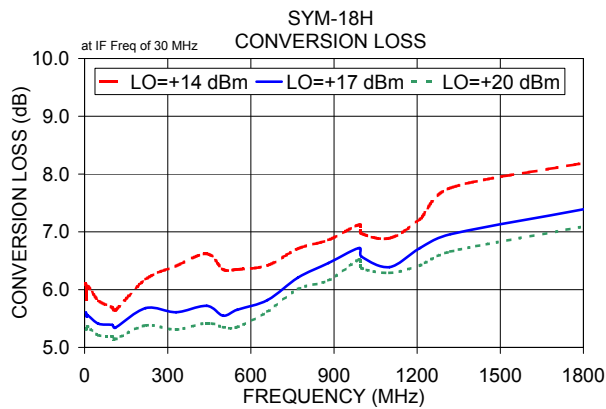
Typical Performance Data

Frequency (MHz)		Conversion Loss (dB)	Isolation L-R (dB)	Isolation L-I (dB)	VSWR RF Port (:1)	VSWR LO Port (:1)
RF	LO	LO +17dBm	LO +17dBm	LO +17dBm	LO +17dBm	LO +17dBm
5.00	35.00	5.61	50.30	38.90	1.58	1.80
8.00	38.00	5.53	50.90	39.40	1.36	1.78
10.00	40.00	5.56	51.30	39.60	1.31	1.78
50.00	80.00	5.41	55.80	42.20	1.22	1.77
100.00	130.00	5.39	54.70	44.40	1.25	1.73
110.48	140.48	5.34	53.80	44.10	1.29	1.74
220.45	250.45	5.68	48.00	48.90	1.43	1.73
330.43	360.43	5.61	45.10	53.30	1.55	1.59
440.40	470.40	5.72	44.40	52.20	1.76	1.50
500.00	530.00	5.55	44.30	48.10	1.80	1.51
550.38	580.38	5.65	45.40	48.00	1.94	1.39
660.35	690.35	5.82	47.50	43.10	2.08	1.33
770.33	800.33	6.21	50.80	40.00	2.30	1.32
880.30	910.30	6.46	52.20	38.70	2.35	1.25
990.28	1020.28	6.72	53.70	37.60	2.52	1.22
1000.00	1030.00	6.57	52.40	37.70	2.61	1.21
1100.25	1130.25	6.39	46.80	36.10	2.52	1.23
1210.23	1240.23	6.72	42.30	33.40	2.43	1.24
1320.20	1350.20	6.96	38.90	31.20	2.40	1.25
1800.00	1830.00	7.39	32.00	30.20	2.30	1.88

Electrical Schematic



Performance Charts



Notes

- A. Performance and quality attributes and conditions not expressly stated in this specification document are intended to be excluded and do not form a part of this specification document.
- B. Electrical specifications and performance data contained in this specification document are based on Mini-Circuit's applicable established test performance criteria and measurement instructions.
- C. The parts covered by this specification document are subject to Mini-Circuits standard limited warranty and terms and conditions (collectively, "Standard Terms"); Purchasers of this part are entitled to the rights and benefits contained therein. For a full statement of the Standard Terms and the exclusive rights and remedies thereunder, please visit Mini-Circuits' website at www.minicircuits.com/MCLStore/terms.jsp

